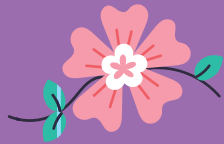


Unit 21  
Our Home  
4 to 5 age



Vocabulary



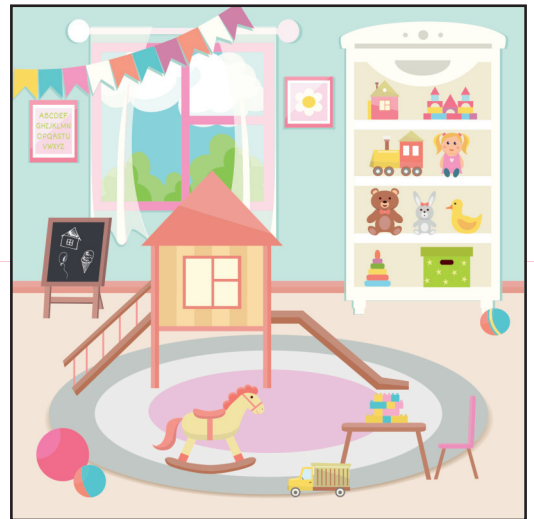
May



Bedroom



Kitchen



Playroom

What is the name of this room?

It is a ....

Lets go to the kitchen!



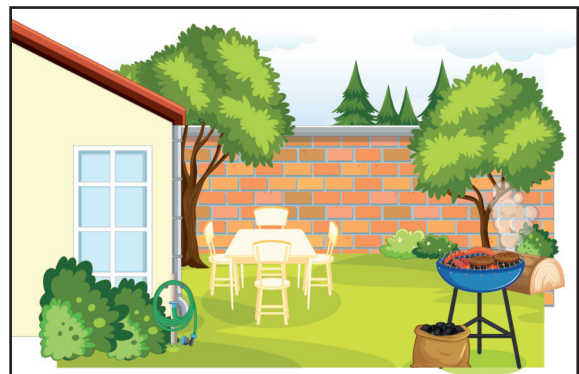
Song



Story



Cartoon



Garden

# Unit 22

## Household Materials

4 to 5 age

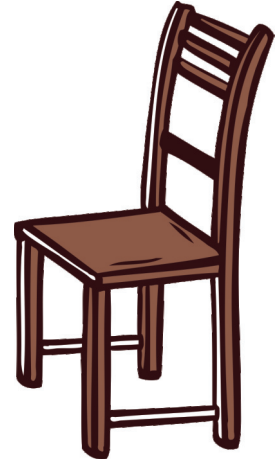
### Vocabulary



Television/TV



Bed



Chair



Picture



Phone



Clock



What is this?

This is  
a bed

Song



Story



Cartoon



# Monthly Commands



Attention: "Please!"  
Do not forget to add  
please at the beginning  
of some of these  
commands.



Let's Go To The  
Garden



Let's Go To The  
Kitchen



Calm Down



Take It

# STORY A2



## KIKI'S STRAWBERRY GUM

Kiki is a very smart, excited, and curious girl, but sometimes she can be careless. Whenever she takes out her strawberry gum, she leaves it anywhere.

While playing in the garden, Kiki took out her gum and put it on the chair. Her brother came and sat on it:

- "Kiki! Gum should not be put on the chair!"

When leaving the living room, Kiki put her gum on the phone. When her grandpa picked up the phone, the gum stuck to his hand:

- "Kiki! Gum should not be put on the phone!"

In the bedroom, while fixing the bed, Kiki put her gum on the bed . The gum stuck to her mom's favorite pajamas:

- "Kiki! Gum should not be put on the bed!"

While eating in the kitchen, Kiki put her gum on the clock. The cat, who came near the clock, tried to smell the gum, and it got stuck on its nose:

- "Kiki! Meow, gum should not be put on the clock!"

Kiki was tired of everyone warning her. She started dreaming. When she grows up, she wants to invent a trash can that follows her wherever she goes.

Kiki was dreaming, but she didn't listen to the warnings. While brushing her teeth in the bathroom, she put her gum on the comb. Then she forgot and combed her hair with that comb. When the gum got stuck in her hair, she laughed out loud:

- "Kiki! Gum should not be put on the comb!"

After that day, Kiki always carefully threw her gum into the trash can.

### QUESTIONS

- 1 - Did Kiki use to put her gum in the same place? (No.)
- 2 - Where did Kiki put her gum last time and what happened? (On her hair brush and while combing her hair it stuck.)